

# Phonics & English 1

WORKTEXT

*Third Edition*



# Contents

<b>Unit 1</b>	God's Colorful Creation.....	1
<b>Unit 2</b>	Creatures Great & Small.....	59
<b>Unit 3</b>	Special Deeds & Inventions .....	103
<b>Unit 4</b>	Adventures .....	173
<b>Unit 5</b>	Making Melody .....	233
<b>Unit 6</b>	Treasures .....	279



Name \_\_\_\_\_

-----  
-----  
-----

Circle the pictures that begin with *t*.



© 2005 BJU Press. Reproduction prohibited.



# God Made Purple

Circle the correct picture.



Buddy



Ashley



Alex



Papá



Susita



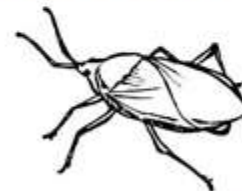
Mamá

© 2005 BJU Press. Reproduction prohibited.

Color the pictures to match the beginning sounds.

t = blue

i = purple



Phonics and English 1  
Lesson 2  
Heritage Studies: developing awareness of family structure  
Phonics: matching letters and initial sounds  
Word recognition: reading a color key  
Fine motor skills: coloring pictures



Name \_\_\_\_\_

-----

\_\_\_\_\_

Color the pictures of the Lopez family.



Papá



Grandpa and Grandma



Mamá



Marta



Carlos



Susita

© 2005 BJU Press. Reproduction prohibited.

# God Made Black and White

Draw a line to the correct picture.

it

sit



Sit here, Buddy.



Sit here, Dad.



Color each flagpole to match the beginning sound.



t = blue  
s = purple

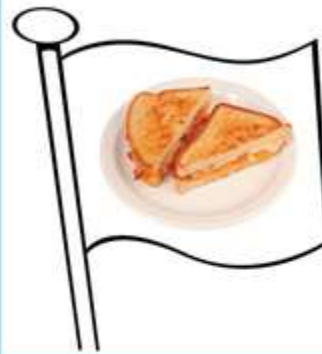


Name \_\_\_\_\_

\_\_\_\_\_

Color each flagpole.

**t = blue      s = purple**



© 2005 BJU Press. Reproduction prohibited.





# God Made Green

Read the word families.  
Draw a line from the picture to the correct word.

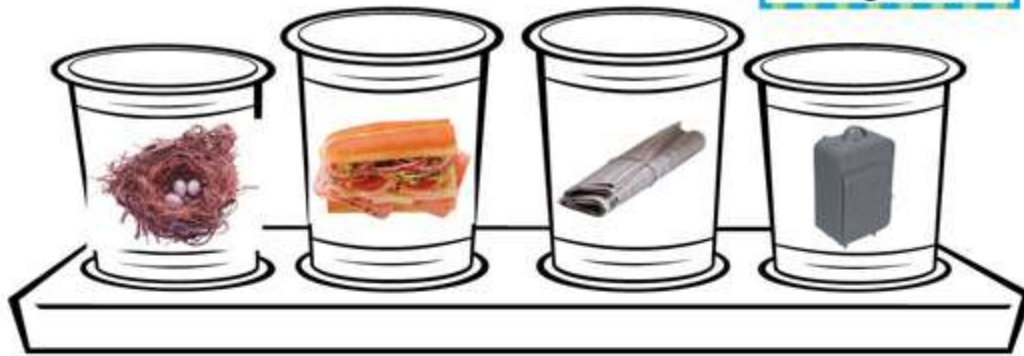
it  
sit



in  
sin  
tin

Color the tin cans to match the beginning sound.

s = purple  
n = green



© 2005 BJU Press. Reproduction prohibited.

Circle the correct beginning letter.



t s



i n

Phonics and English 1  
Lesson 4  
Phonics: reading word families; matching letters and initial sounds  
Word recognition: reading a color key  
fine motor skills: coloring pictures





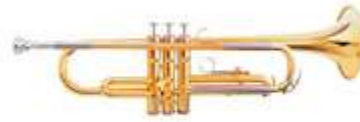
Name \_\_\_\_\_

-----  
\_\_\_\_\_

Circle the correct beginning letter.



t n



i s



n t



i s



t i



n s



s n



i s



i n



s t

© 2005 BJU Press. Reproduction prohibited.



# Seeing Double

Circle the correct vowel.



e i



u i



e i



e i



e u



e u



u i



e i



e i

© 2005 BJU Press. Reproduction prohibited.



Name \_\_\_\_\_

\_\_\_\_\_

\_\_\_\_\_

Circle the correct capital letter.

i	T	I
t	T	D
s	D	S
d	T	D
b	B	S
u	U	D
w	B	W
n	N	W
h	U	H
e	W	E



© 2005 BJU Press. Reproduction prohibited.

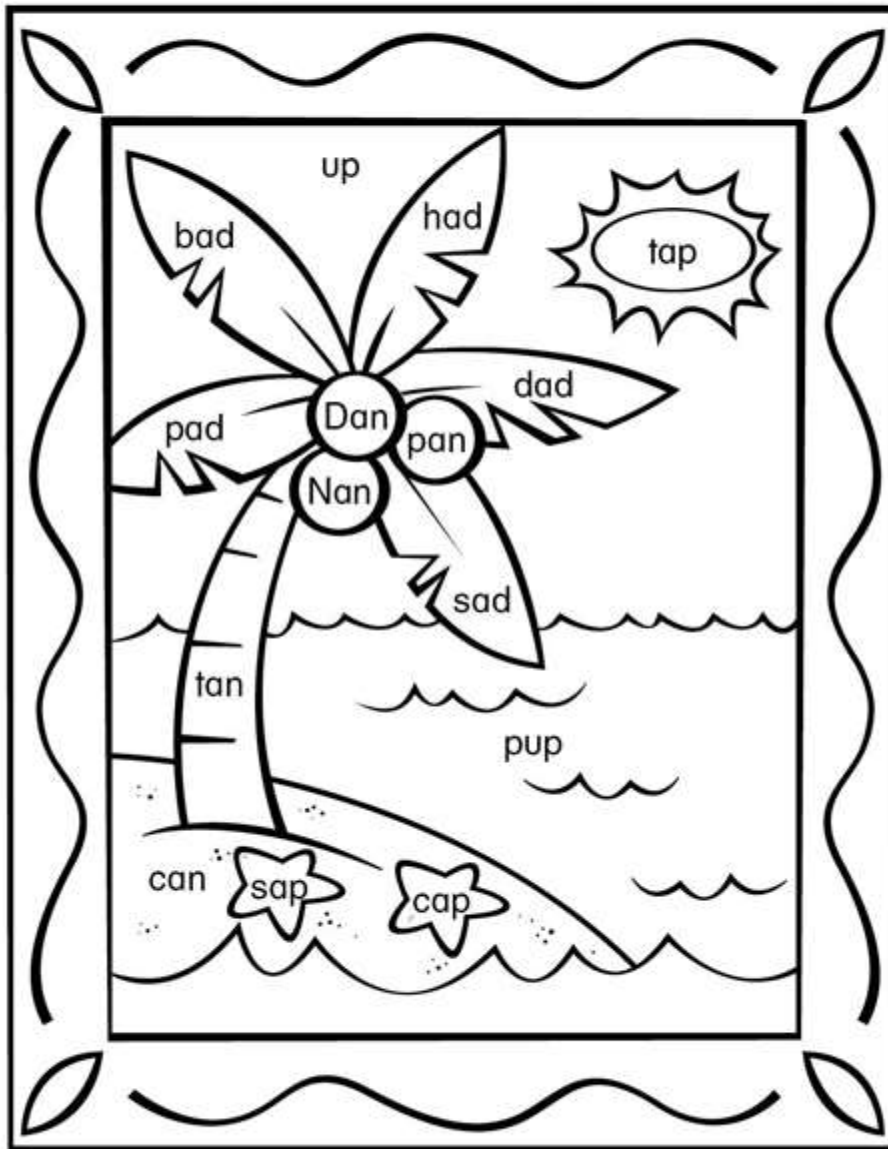


Name \_\_\_\_\_

-----  
\_\_\_\_\_

Color the picture to look like a watercolor painting.

**\_ap = yellow    \_up = blue    \_an = brown    \_ad = green**



© 2005 BJU Press. Reproduction prohibited.