

Music is Fun!

Grade 6

Written by Linda Ann Hopley
Illustrated by S&S Learning Materials

About the author:

Linda Ann Hopley has been a piano and theory teacher for over 30 years. She has written material for music for the last ten years. She loves working with children and helping them to develop an interest and appreciation for music.

Copyright © 2010

This publication may be reproduced under licence from Access Copyright, or with the express written permission of On The Mark Press / S&S Learning Materials, or as permitted by law.

All rights are otherwise reserved, and no part of this publication may be reproduced, stored in a retrieval system, or transmitted in any form or by any means, electronic, mechanical, photocopying, scanning, recording or otherwise, except as specifically authorized. "We acknowledge the financial support of the Government of Canada through the Book Publishing Industry Development Program (BPIDP) for this project."

All Rights Reserved
Printed in Canada

Published in the United States by:
On the Mark Press
P.O. Box 433
Clayton, New York
13624
www.onthemarkpress.com

ISBN: 9781770781634



Published in Canada by:
S&S Learning Materials
15 Dairy Avenue
Napanee, Ontario
K7R 1M4
www.sslearning.com

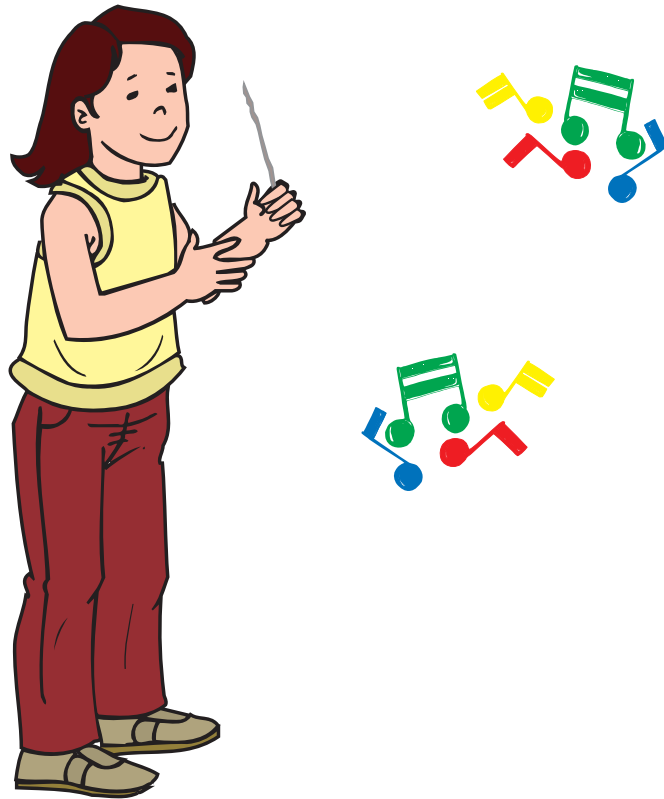
At A Glance

Learning Expectations	The Conductor	1, 2, 3, 4 Beat Rests, Notes & Their Names	8th Notes and Rests	Treble, Bass, Alto & Tenor Clefs	The Staff, Lines, Bars & Repeat Signs	Tied Notes	The Brace	Time Signatures	Key Signature vs. Accidentals	Sharps, Flats & Naturals	The Sayings For Note Naming	The Composer Nadia Boulanger	A B C D E F G and Do to Do Scale	Music Reviews and Games
Understanding Concepts														
• Learning note and rest values.	•	•	•			•		•						•
• Understanding 1/2 and 1/4.		•	•					•						•
• Learning the different kinds of notes and rests and their names.		•	•											•
• Learning what the two scales are.													•	•
• Identifying sharps, flats, and naturals.									•	•				•
• Noting the difference between an accidental and a key signature.									•					•
• Learning what a conductor does.	•							•			•			•
• Learning the sayings to name notes.			•								•			•
• Recognizing the staff and its signs.				•	•		•	•	•	•				•
Skills of Inquiry, Design, and Communication														
• Creativity	•	•	•	•	•	•	•	•	•	•	•	•	•	•
• Working within a group.	----- optional -----												•	•
• Multiplying, Adding, Subtracting.		•	•			•								•
• Relating music to the outside world.												•		•

Table of Contents

At A Glance™	2
Teacher Assessment Rubric	4
Student Self-Assessment Rubric	5
Introduction	6
Materials List	7
Teacher Suggestions	8
Music Glossary	9
Teacher Notes - Music Incentives	13
Teacher Notes - The Conductor's Wand	14
Teacher Notes - Notes, Rests, Music Signs and Sayings of the Staves, and Stencils	15
Musical Display Sheets	16
Worksheets on Notes, Beats, Sharps, Flats, and Naturals	19
Rhythm Exercise to Play	23
Worksheets on Music Signs, the Staff, and Clefs	24
Stencils	32
Teacher Notes - The Conductor, Time Value, Composer Nadia Boulanger, Holiday Worksheets	33
A Music Story	34
Time Value Worksheets	37
The Two Scales	39
Reproducible Story Book - The Composer Nadia Boulanger	40
Holiday Worksheets	44
Teacher Instructions for the Games	48
Game Cards	50
Teacher Notes - Review Worksheets, Quiz, and Review Art	58
Review Worksheets	59
Review Quiz	62
Certificates	63
Answer Sheet	64

The Conductor's Wand



Instructions

List of Material Needed:

- one chopstick for each student (if chopsticks are not available straws could also be used)
- tin foil
- glue or tape may be necessary

Construction:

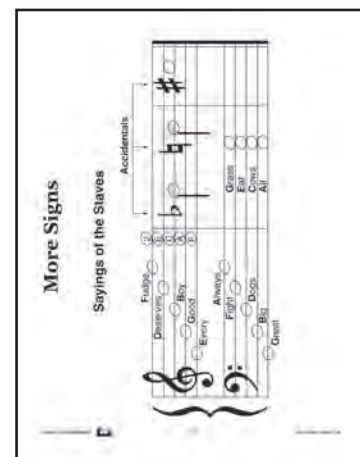
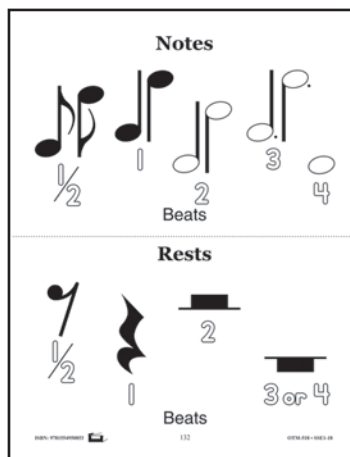
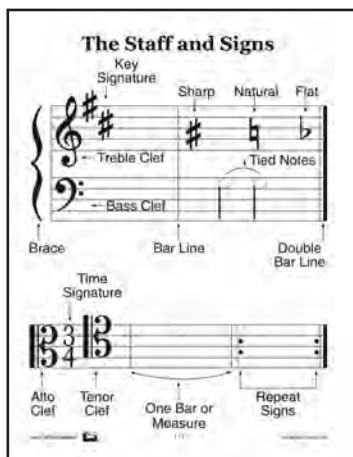
- Each student should wrap the chopstick or straw with the tin foil making sure that the ends are well covered and tightly wrapped. This is to prevent the tin foil from falling off or coming apart while the students are using the wand for conducting.
- If needed glue can be used to stick down the ends or scotch tape can be wrapped around the ends.
- The student should try to wave it around to make sure it is secure.

Teacher Notes:



Notes, Rests, Music Signs, Sayings of the Staff, and Stencils

1. There are three display sheets on notes, rests, and signs of the staff which could be put on display in the classroom or they could be added to the students' music books for reference. They are found on pages 16, 17, and 18 of the book.
2. The next four worksheets are on note and rest values along with addition and subtraction. They are found on pages 19, 20, 21, and 22. These pages will help the students learn note and rest value and the difference between them.
3. The rhythm exercise found on page 23 will help the student to remember the difference in the note and rest values. The rhythm exercise can be done with sticks or hand clapping. Make sure that the students realize that a rest is a period of silence. These lines can be practised in groups and then played altogether with each group clapping or tapping their own line.
4. Page 24 deals with sharps, flats, naturals, and key signatures.
5. Pages 25, 26, 27, and 28 are about the different clefs and display how the sayings show which notes go on which lines for each clef.
6. Pages 29, 30, and 31 are worksheets based on the musical sayings.
7. The stencils found on page 32 should be cut out and glued onto a sturdy backing and laminated. The teacher may want to make many copies of the stencils as they wear out from student usage. The stencils can be fun and creative for students. The students can make the stencils into insects, garden creatures, and flowers. This exercise can be done individually or in groups.



The Staff and Signs

Key Signature

Sharp Natural Flat

Treble Clef

Bass Clef

Tied Notes

Brace

Bar Line

Double Bar Line

Detailed description: This diagram illustrates the components of a musical staff. On the left, a brace groups two staves. The top staff features a treble clef, a key signature of two sharps (F# and C#), and a sharp sign on the second line. The bottom staff features a bass clef. A bar line separates the first measure from the second. The second measure contains a sharp sign on the second line, a natural sign on the second space, and a flat sign on the second space. A double bar line follows. Below the second measure, two notes on the bottom staff are connected by a curved line labeled 'Tied Notes'. Arrows point from labels to these specific elements.

Time Signature

Alto Clef

Tenor Clef

One Bar or Measure

Repeat Signs

Detailed description: This diagram shows a musical staff with a time signature of 3/4. The first measure is marked with an alto clef and a tenor clef. A bar line follows. The second measure is marked with a repeat sign (two dots on the staff). A double bar line follows. A curved arrow below the staff spans from the beginning of the second measure to the end of the first measure, labeled 'One Bar or Measure'. Another curved arrow below the staff spans from the beginning of the second measure to the end of the second measure, labeled 'Repeat Signs'. Arrows point from labels to these elements.

